



CONNECTING A SCUBAPRO® GALILEO 2 (G2), ALADIN SPORT MATRIX OR ALADIN H MATRIX TO LOGTRAK VIA BLUETOOTH® LOW ENERGY (BLE)



From a MAC

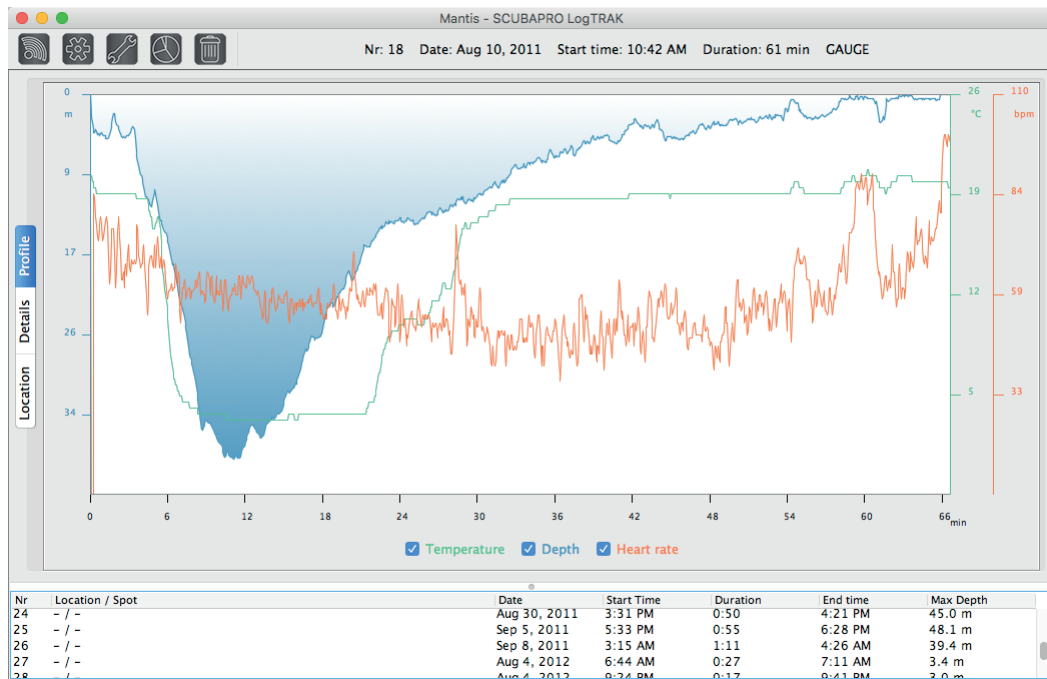
1. Install LogTRAK 1.4.0.0 [or higher]
2. Plug in a **Bluegiga BLED112** USB adapter to your Mac.
[More information about the Bluegiga BLED112 USB adapter can be found at <http://www.silabs.com/products/wireless/Bluetooth®/Bluetooth®-smart-modules/Pages/bled112-Bluetooth®-smart-dongle.aspx>]

Note:

We are constantly improving LogTRAK. In a future update release, LogTRAK will manage the connection between your Mac and your dive computer via an integrated or generic Bluetooth® 4.0 [or higher] USB adapter.

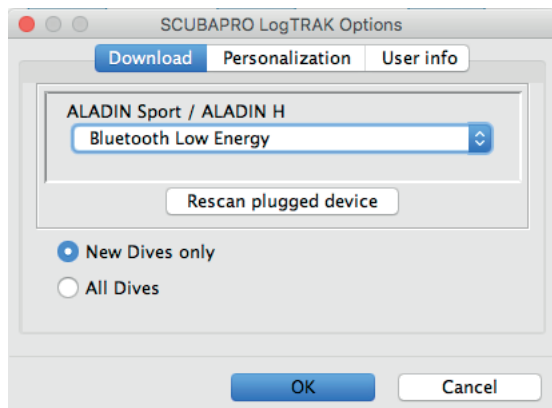
In order to connect your dive computer to your Mac via LogTRAK 1.4.0 correctly, it is essential to use a **Bluegiga BLED112** USB adapter.

3. Start LogTRAK on your Mac





4. Use menu “Extras”, “Options...” or click on the icon

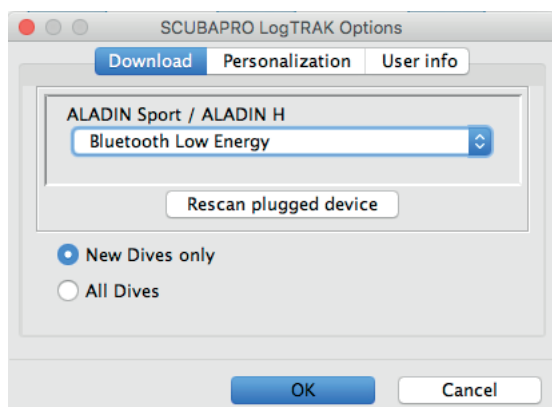


5. On the “Download” tab, select “Bluetooth® Low Energy” and click “OK”.

Note:

Unless you modify it, this will become the default setup and you won't need to repeat steps “4” and “5” the next time you use LogTRAK.

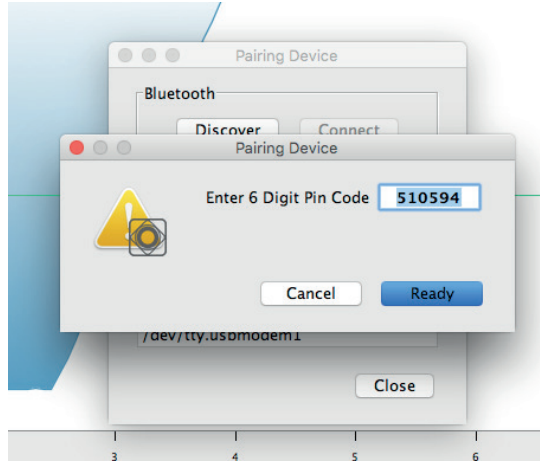
6. Switch on your dive computer
7. Go to the Bluetooth® menu of your dive computer and activate Bluetooth® pairing mode [Please refer to your dive computer's user manual for more details on how to activate Bluetooth® pairing mode]
8. On LogTRAK, menu “Dive”, “Download dives” or click on the icon
9. Select your dive computer and click “Connect” [or double click on your dive computer from the devices list]





SCUBAPRO

Enter the 6 digit pin code shown on your dive computer display and click “Ready” (or press “Enter” on your keyboard).



10. LogTRAK will start downloading dives from your dive computer.

Note:

If your dive computer is connected to your MAC, you will see the connection symbol: on your dive computer display.

